

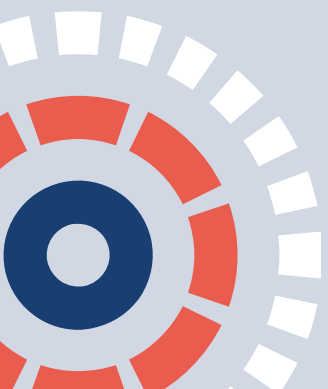
# NIHR: Industry Offer (AMR)

Dr Mimoza Hoti,  
Business Development Manager, NOCRI

May 2021



Who we are



# What is the NIHR?

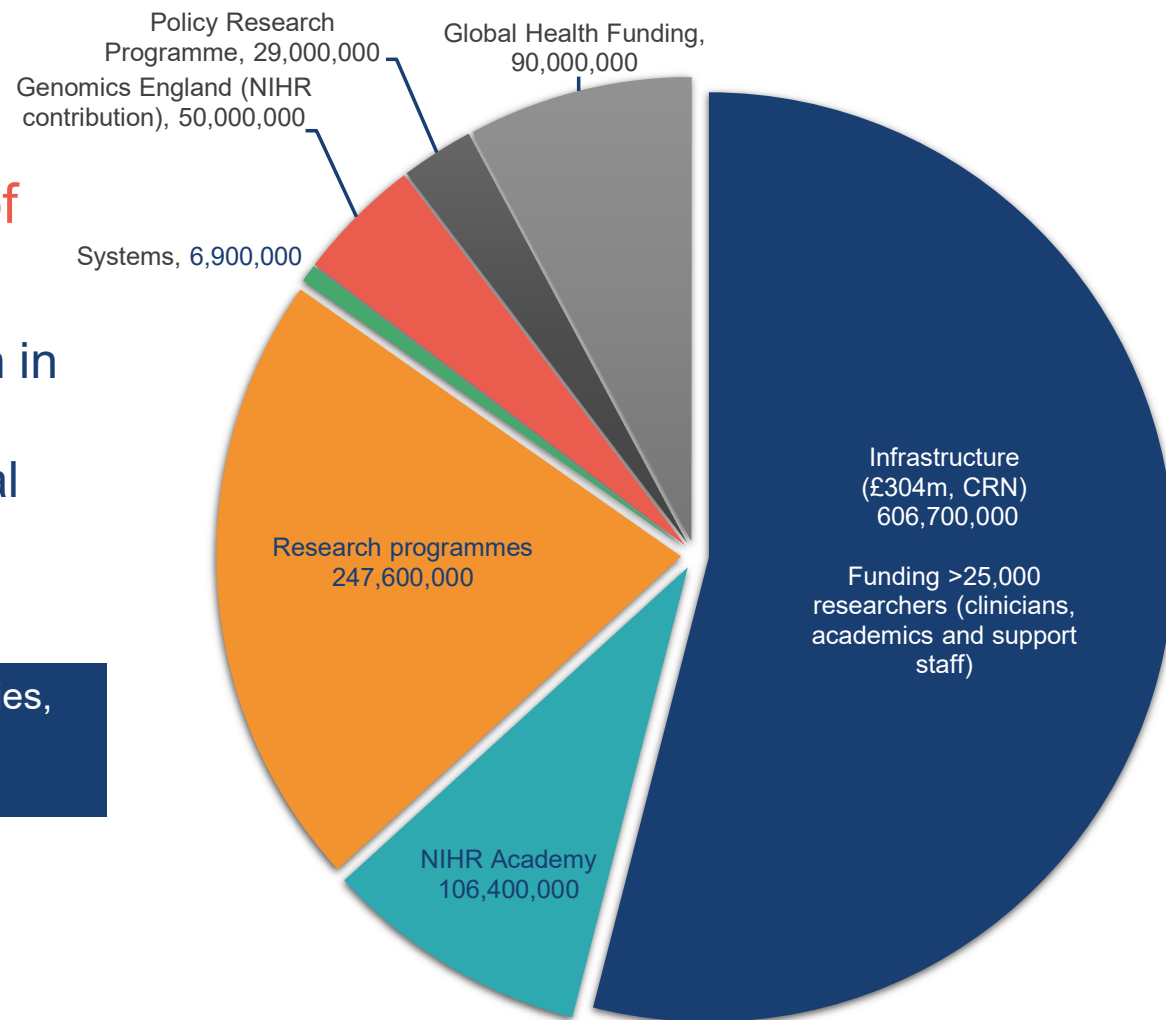
Aim: 'Improve the health and wealth of the nation through research'

Largest funder of health and care research in the UK

Virtual Organisation to support translational research and management of clinical trials across the NHS and partner universities.

Supports collaborative projects between industry, charities, academia, other funders and the NHS, supporting the development of therapeutics, medical devices and IVDs

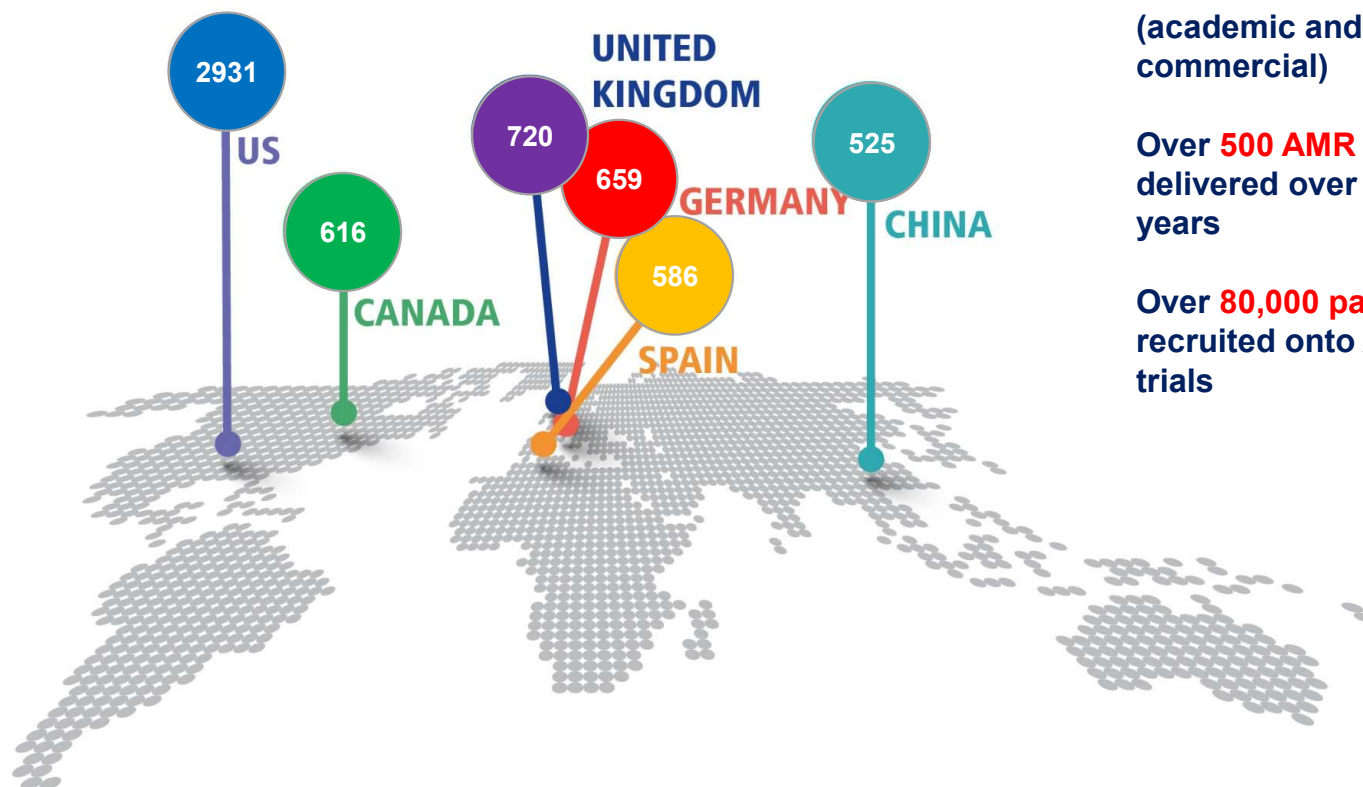
**Total: £1,152.4m / yr (2018/19)**



# UK v World

Top six countries based on number of commercial (industry sponsored) trials across all clinical phases setup between Apr 2018 to Mar 2019

*(top 5 countries has retained position over last two years, with China gaining ground over Italy and Australia)*



## UK:

**100% NHS Trusts** are research active (academic and commercial)

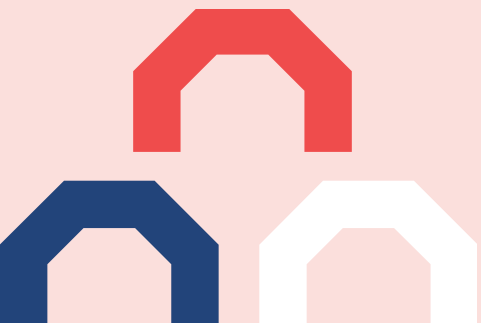
Over **500 AMR studies** delivered over the last 5 years

Over **80,000 patients** recruited onto AMR trials

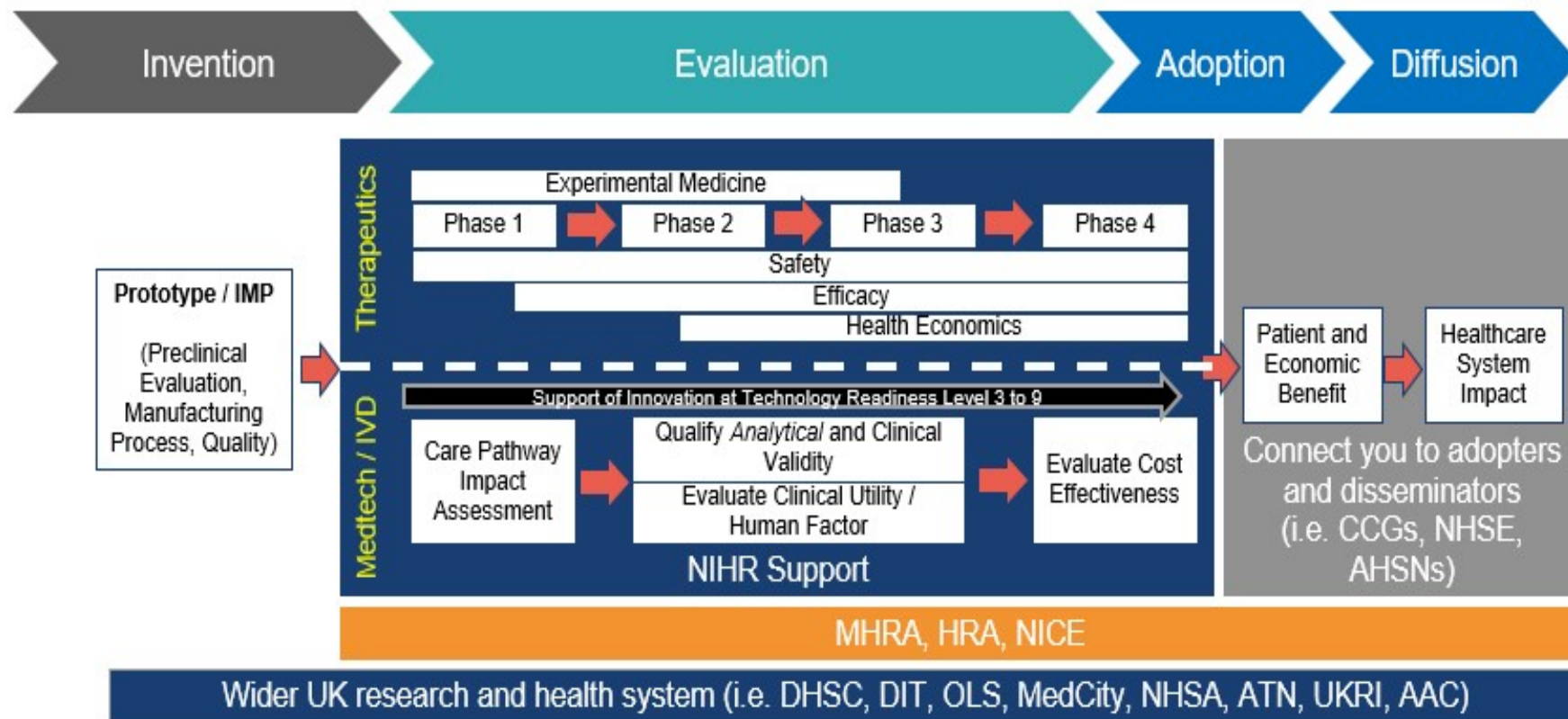
Source: <https://clinicaltrials.gov/> Extracted 18/02/2020



# Our offer to Industry



# Supporting Health Products down the road to market

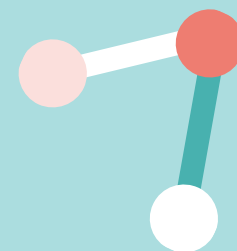


# NIHR Offer to Industry

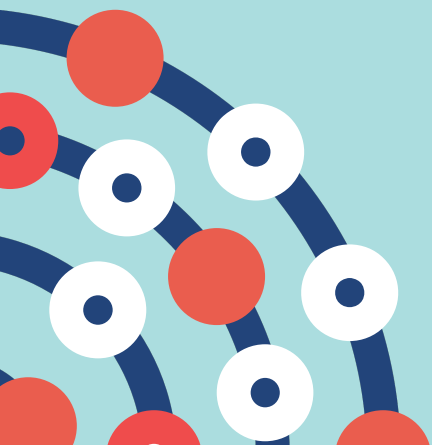
The NIHR supports life science companies translate their new therapeutics, MedTech, diagnostics and digital products into the clinic and then onto market.

We provide a full range of support to innovators throughout their clinical evaluation, from early stage translational research through to later stage clinical trials and investigations in the NHS and social care settings.



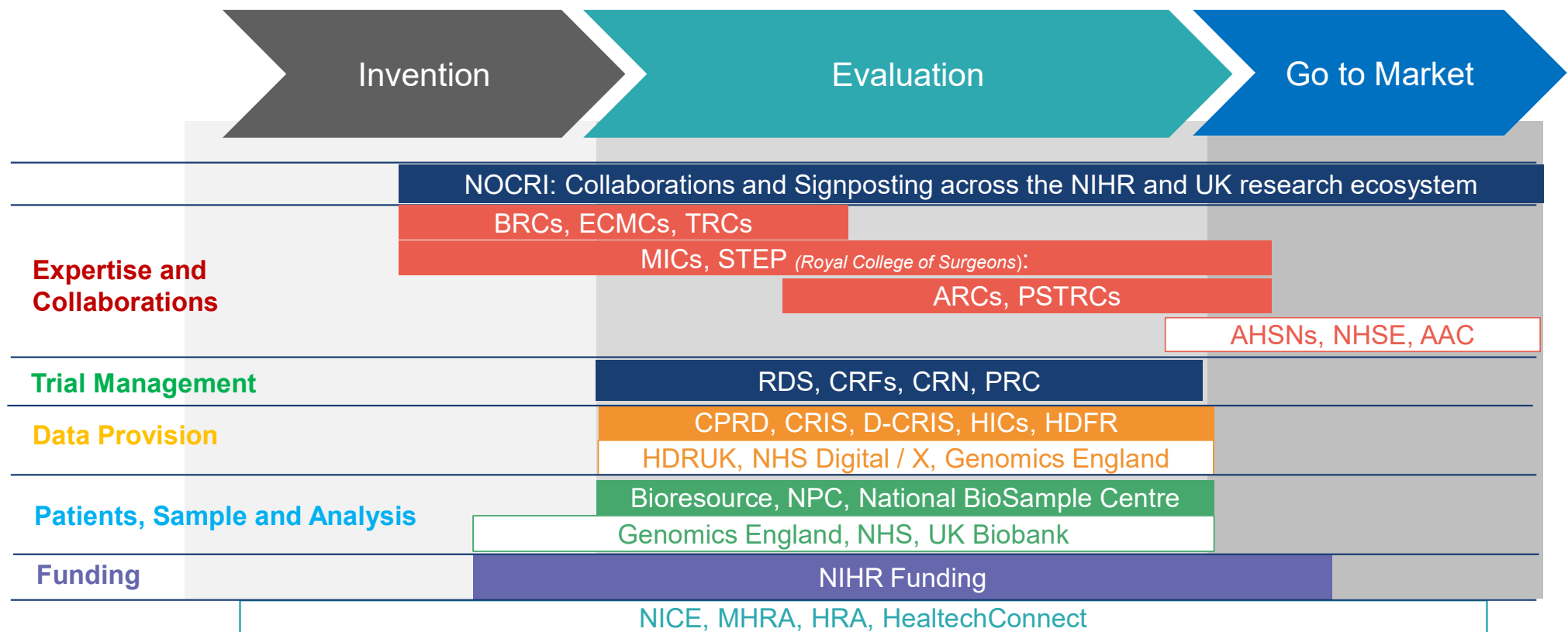


# NIHR Infrastructure





# Helping you navigate the UK's Research and Health System

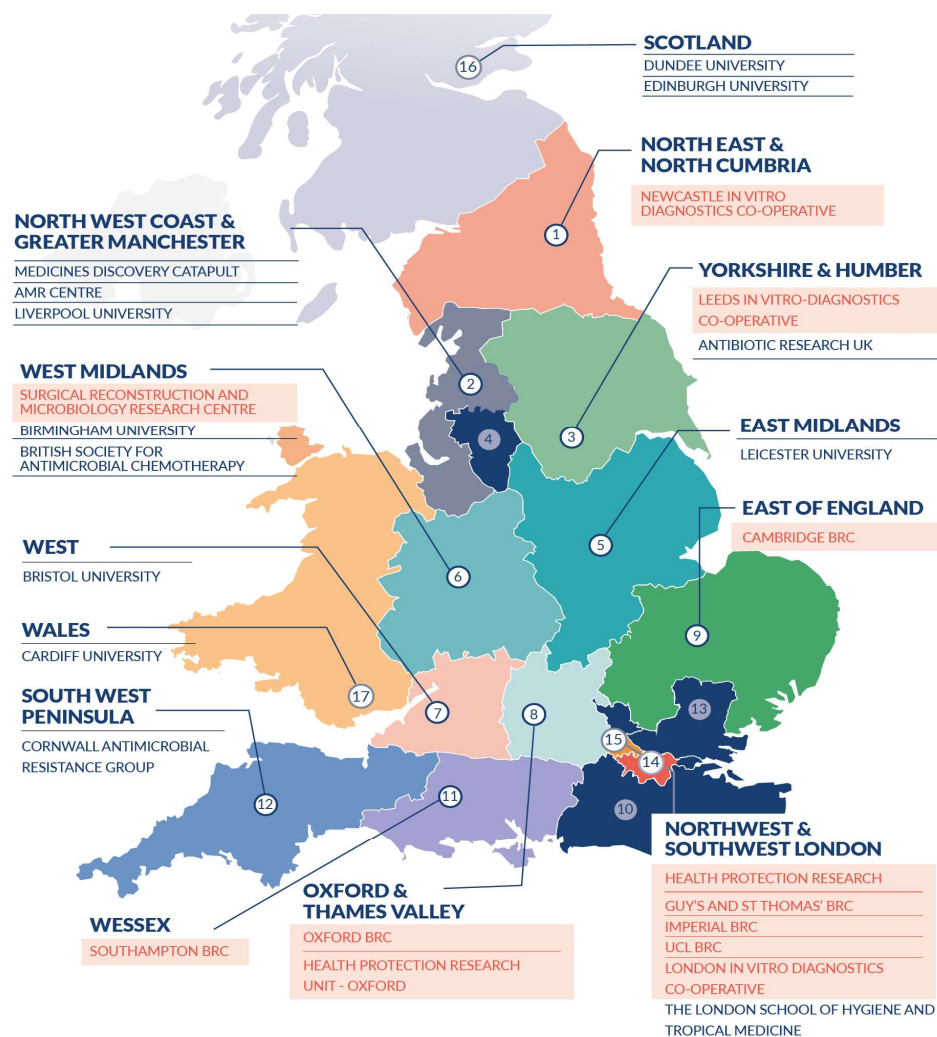


# UK AMR Centres of Excellence and Networks

**OVER 25 AMR**  
**CENTRES OF**  
**EXCELLENCE ACROSS**  
**THE UK FUNDED BY NIHR**  
**AND OUR PARTNERS**

**UK HAS 4/10 OF THE**  
**TOP UNIVERSITIES FOR**  
**LIFE SCIENCE**  
**RESEARCH IN THE**  
**WORLD**

**NIHR HAS**  
**INVESTED £117M**  
**TO STRENGTHEN UK-**  
**BASED CAPABILITY IN**  
**AMR RESEARCH**



# NIHR Infrastructure

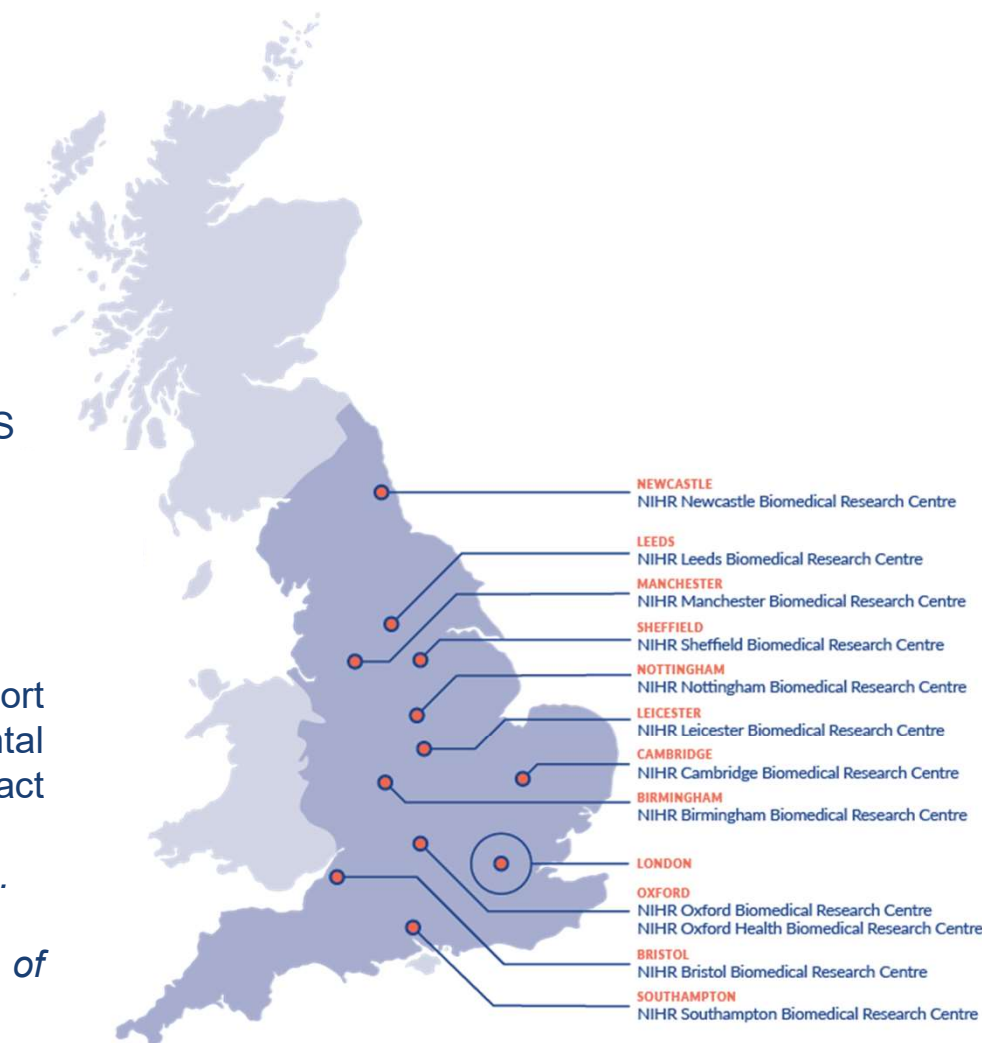
## Biomedical Research Centres (BRCs)

Partnerships between England's leading NHS organisations and universities conducting translational research to transform scientific breakthroughs into life-saving treatments for patients.

These centres are uniquely placed to support industry setup and deliver experimental medicine; whether collaboratively or contract delivery.

*Staffed by expert investigators and clinicians.*

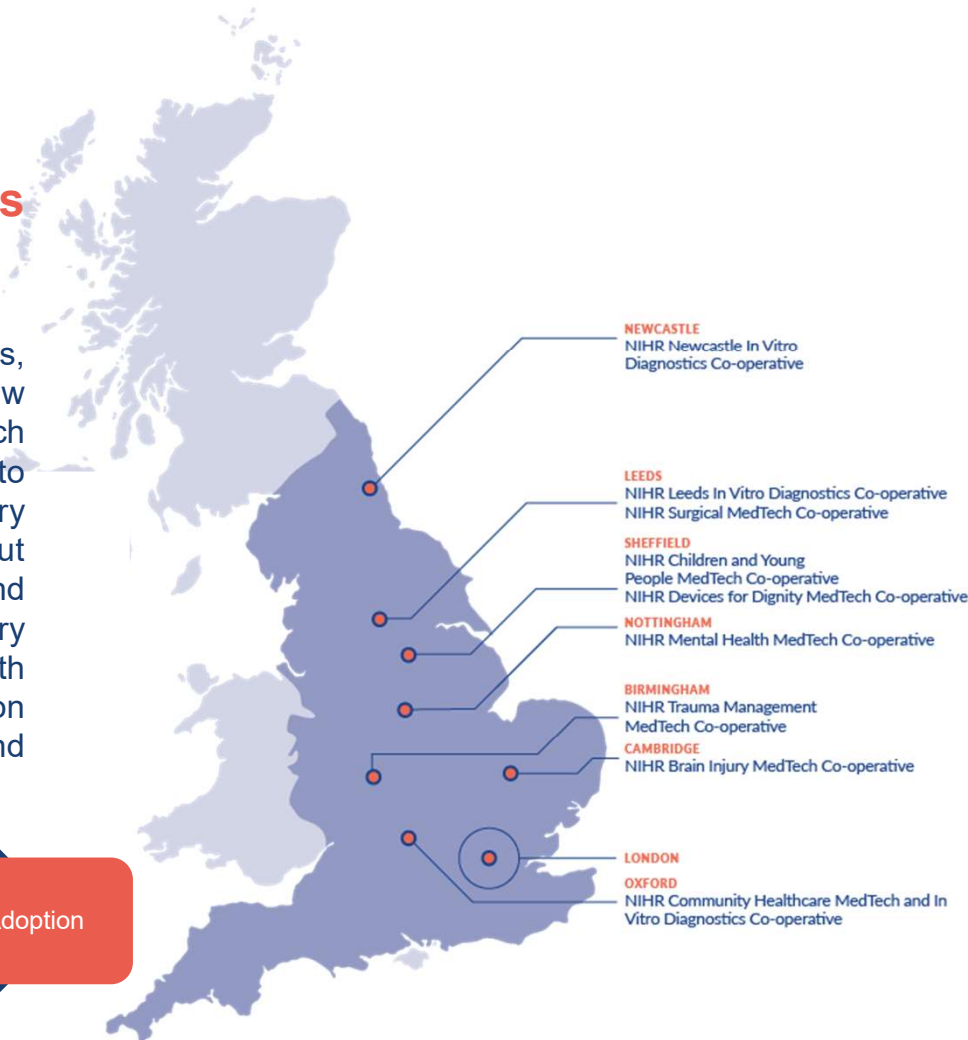
*Host research themes across a range of disease and therapeutic areas*



- 1 - NIHR Barts Biomedical Research Centre
- 2 - NIHR Great Ormond Street Hospital Biomedical Research Centre
- 3 - NIHR Guy's and St Thomas' Biomedical Research Centre
- 4 - NIHR Imperial Biomedical Research Centre
- 5 - NIHR Maudsley Biomedical Research Centre
- 6 - NIHR Moorfields Biomedical Research Centre
- 7 - NIHR Royal Marsden Biomedical Research Centre
- 8 - NIHR University College London Hospitals Biomedical Research Centre

## MedTech and In vitro Diagnostics Cooperatives (MICs)

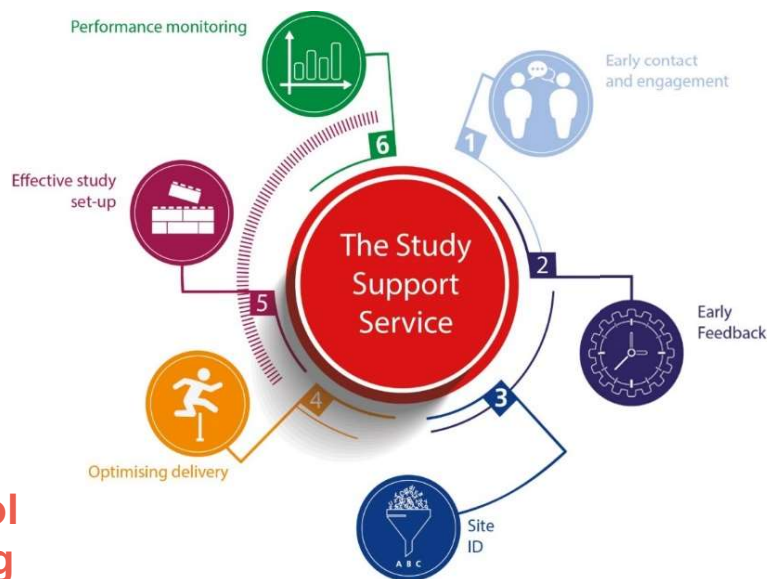
Bringing together patients, clinicians, researchers, commissioners and industry to ensure new technologies are rigorously evaluated. With each centre bringing unique sets of expertise and links into their regional health system, they can support industry carry out care pathway impact analysis, carry out human factor assessment, and collect the clinical and economic evidence required to meet the regulatory requirements and demonstrate value to the health system. MICs can support companies from ideation and prototyping, through to evidence generation and adoption.



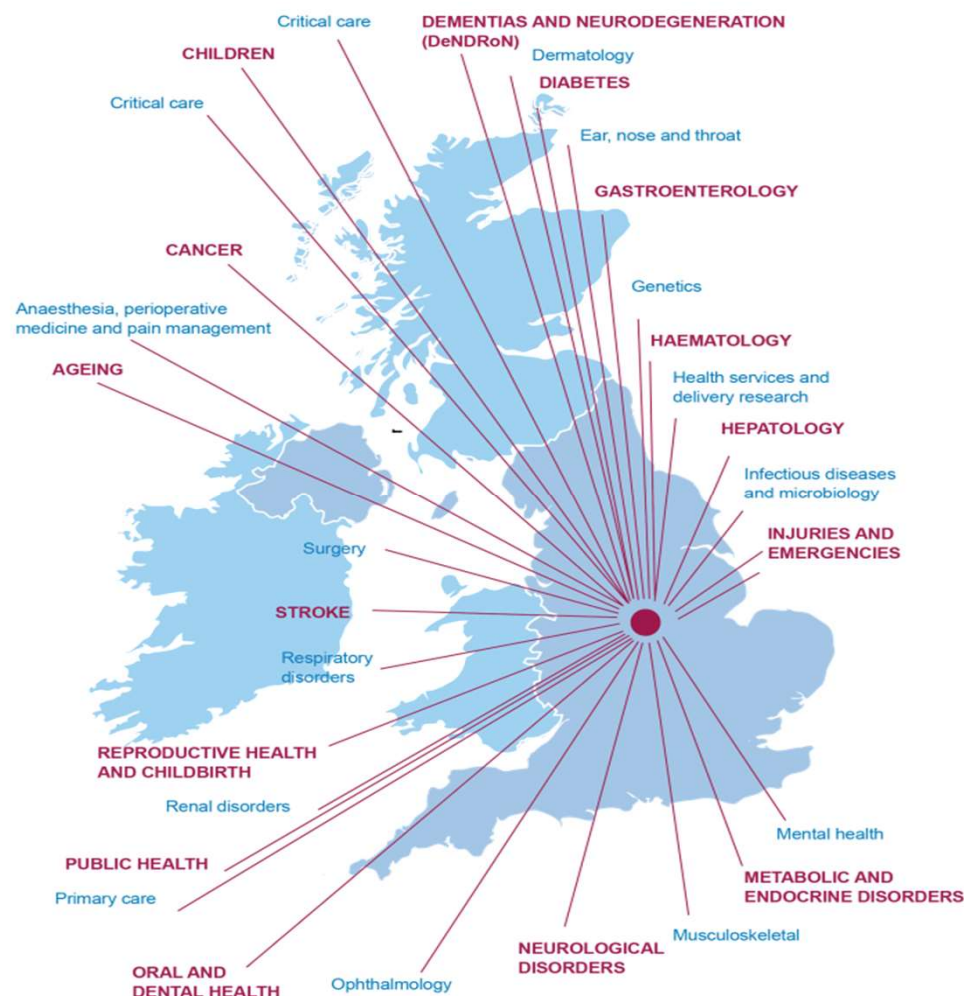
- 1 - NIHR Cardiovascular MedTech Co-operative
- 2 - NIHR London In Vitro Diagnostics Co-operative

## Clinical Research Network (CRN)

Through the 15 Local Clinical Research Networks (LCRNs) that cover the length and breadth of England, the CRN is uniquely placed to support companies deliver research at scale across the entire health system. Each LCRN delivers research across 30 clinical specialties.

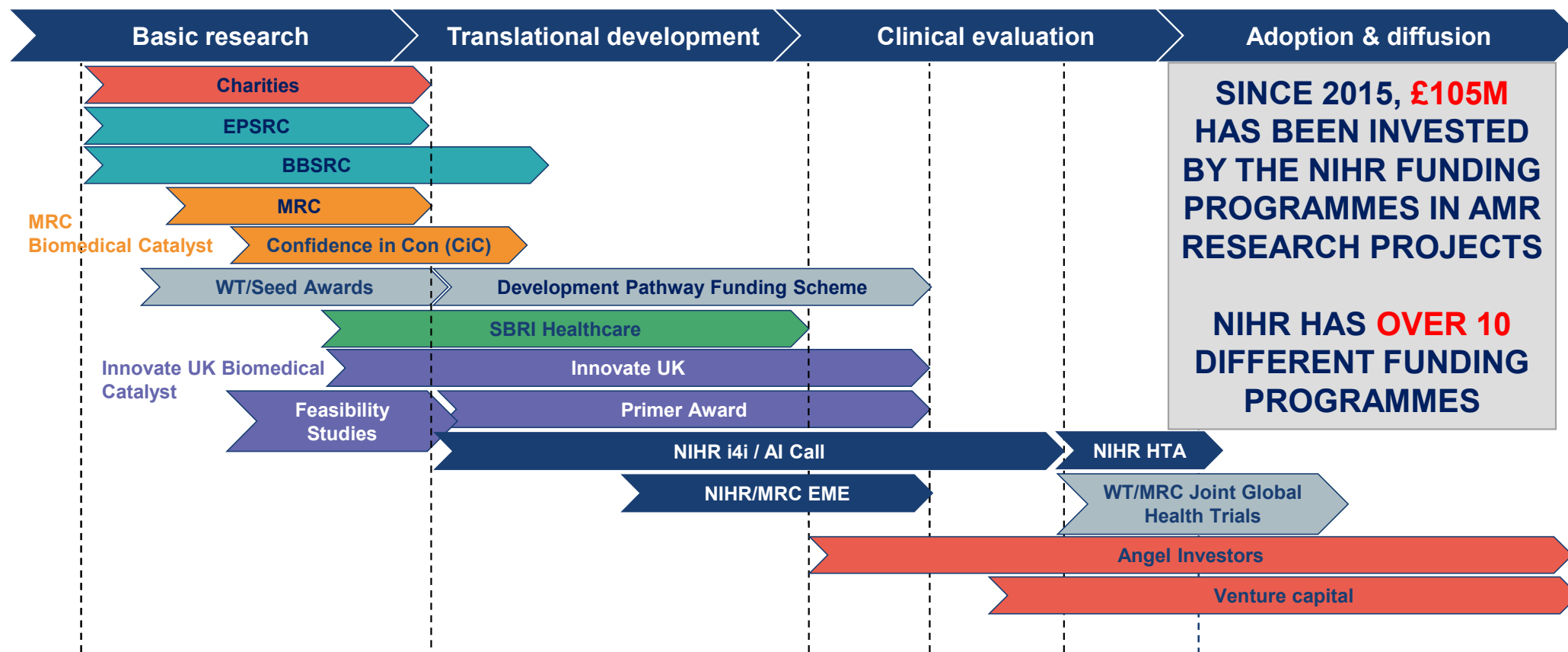


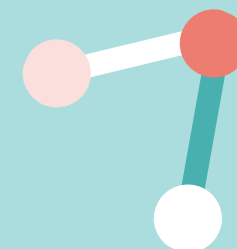
- ✓ Protocol
- ✓ Funding



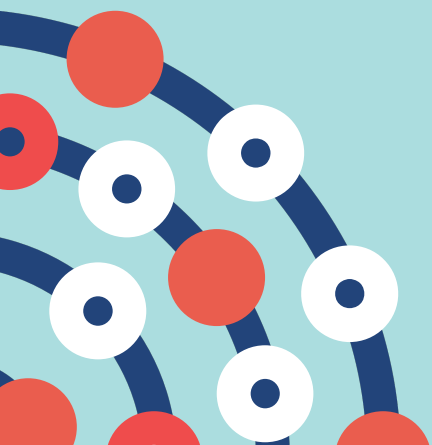


# Funding landscape



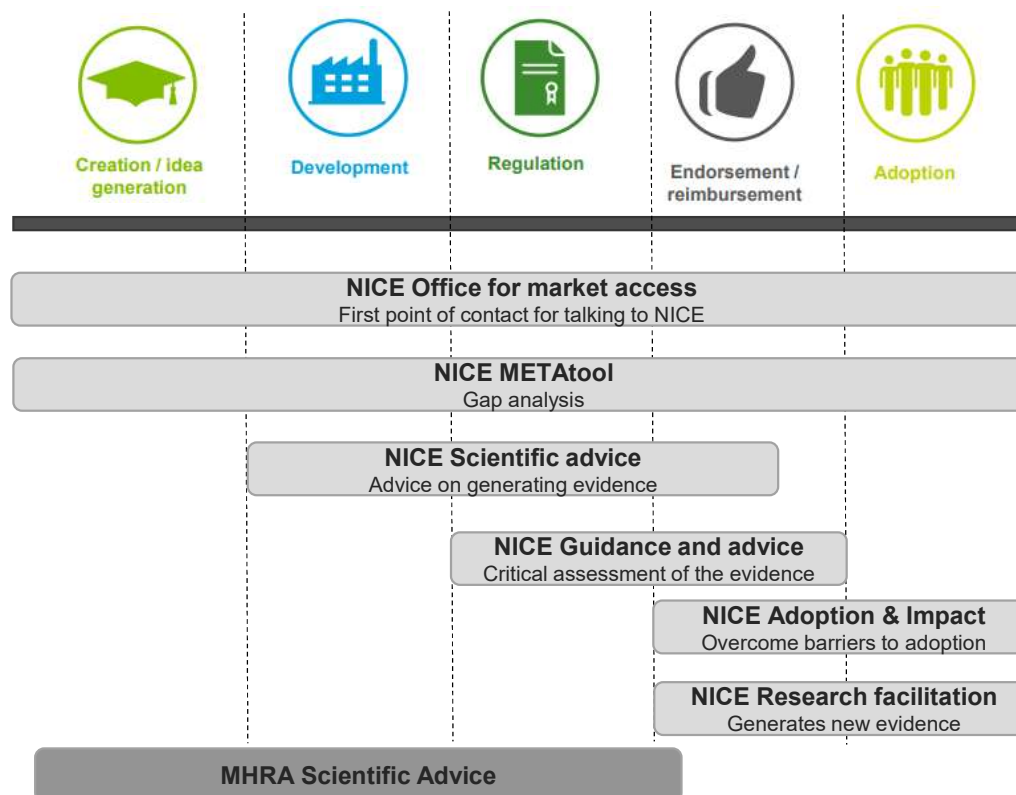


# Additional Support Services



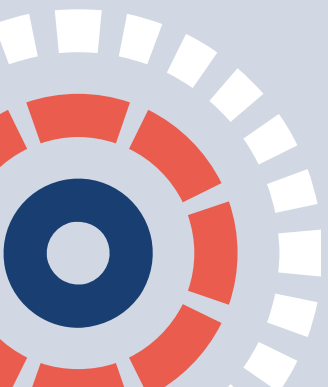
# NICE and MHRA Advice

- NICE offers advice to Medtech and Pharma companies throughout the development and market access phases
- We recommend early engagement
- Healthtech Connect / PharmaScan
- MHRA offers advice across the development pathway





# Our Offer to you





We can support you gain **access to world-leading expertise, research management and provisions** to enable you to generate the evidence required for market access



Support you in access to **funding**

## Our offer to you



Support you building **bespoke collaborations** around your research interests



Connect you to the wider **UK infrastructure and Government** (i.e. DHSC, OLS, DIT, Trade Associations and Clusters)

**Free Service**

Dr Mimoza Hoti  
NIHR Office for Clinical Research Infrastructure

[nocri@nihr.ac.uk](mailto:nocri@nihr.ac.uk)

[www.nihr.ac.uk/industry](http://www.nihr.ac.uk/industry)

